



4 Churchill Road, Scunthorpe, DN17 2EB

£210,000

A really great size three bed semi detached house on the Yaddlethorpe Grange estate. Immaculately presented throughout by the current owners this home is ready to move straight into!

To the ground floor you have an entrance, cozy lounge and a modern kitchen diner across the back with a separate W.C. and access on to the back garden. To the first floor you have two bedrooms and a family bathroom. To the second floor you have the master bedroom with built in storage and an en suite bathroom.

Outside there is a low maintenance rear garden with turf and seating area and off road parking to the front for a couple of vehicles.

Entrance

Lounge



Kitchen diner



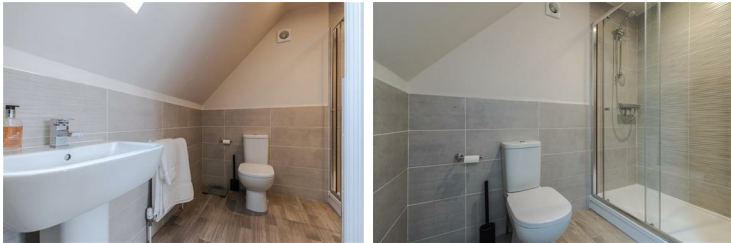
W.C.

Second floor landing

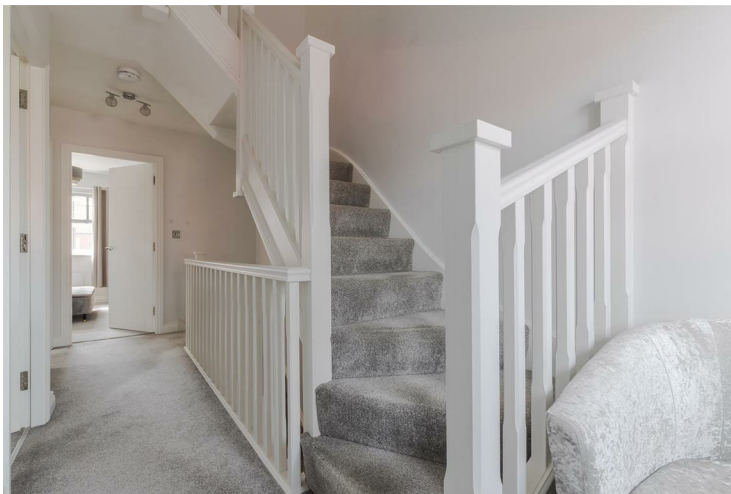
Bedroom one



En suite



First floor landing



Bedroom two



Bedroom three



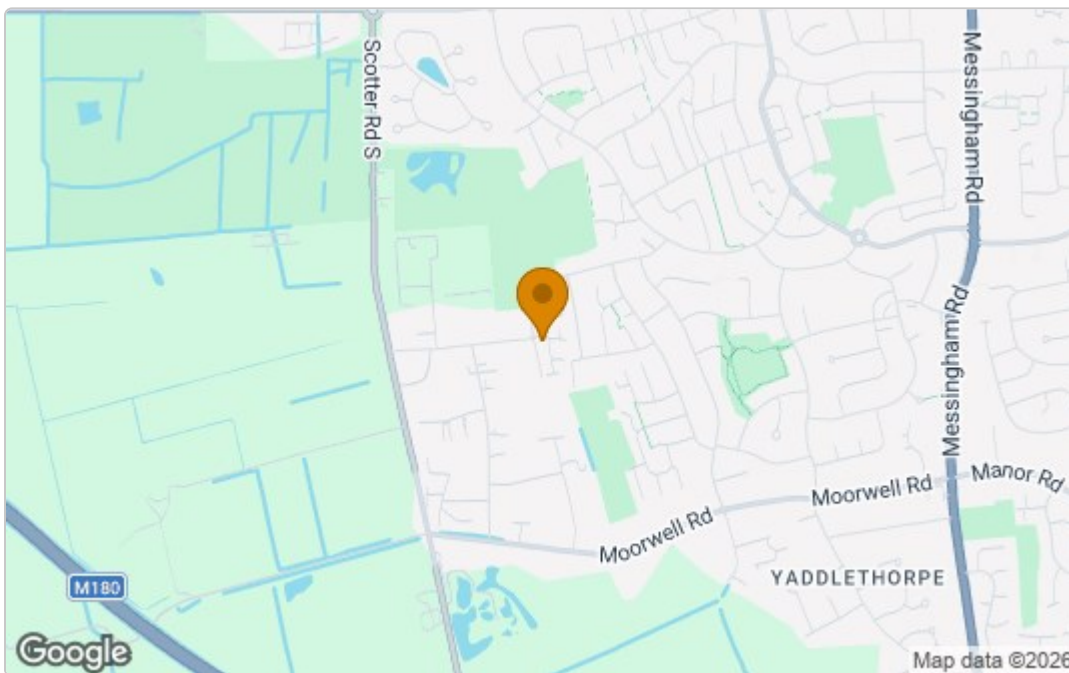
Bathroom



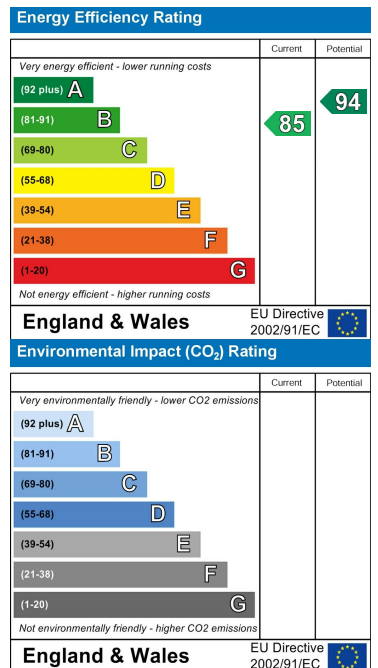
Outside



Area Map



Energy Efficiency Graph



These particulars, whilst believed to be accurate are set out as a general outline only for guidance and do not constitute any part of an offer or contract. Intending purchasers should not rely on them as statements of representation of fact, but must satisfy themselves by inspection or otherwise as to their accuracy. No person in this firm's employment has the authority to make or give any representation or warranty in respect of the property.